

# Abfall trennen - Verantwortung zeigen!



**Landratsamt  
Garmisch-Partenkirchen**  
ZUGSPITZREGION

**Info-Tel 08821 751-363 o. -376**

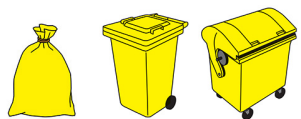
Olympiastraße 10  
82467 Garmisch-Partenkirchen  
www.LRA-GAP.de  
Abfallwirtschaft@LRA-GAP.de

12-2023

Separate waste – show responsibility    Будьте ответственными – сортируйте отходы

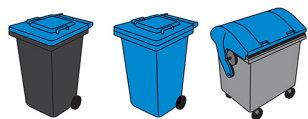
## Verpackungen

Packaging  
Упаковка



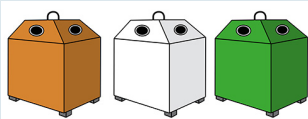
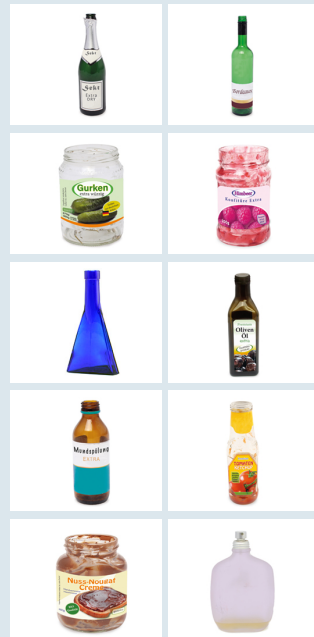
## Altpapier

Paper  
Макулатура



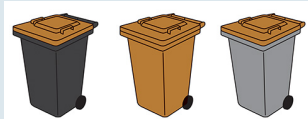
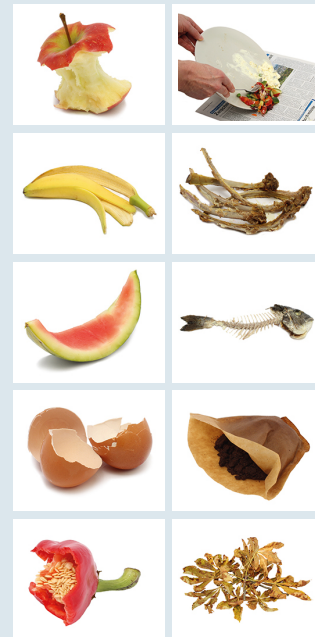
## Altglas

Glass  
Отходы стекла



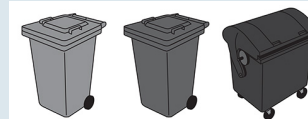
## Bioabfall

Organic waste  
Биомусор



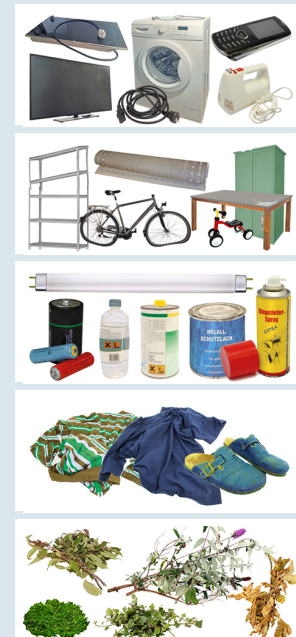
## Restabfall

Residual waste  
Остаточные отходы



## Spezielle Abfälle

Special waste  
Специальные отходы



Telefon  
+49 8821 751-363  
+49 8821 751-376  
www.LRA-GAP.de